

LBA 86

THE ESSENTIAL ANTI-VANDALISM BARRIER FOR SENSITIVE SITES BOOM BARRIER WITH REINFORCED ARM UP TO 8 M



Variable speed,
adjustable from
2 to 9 seconds

Continuous and
intensive operation,
10,000 cycles/day

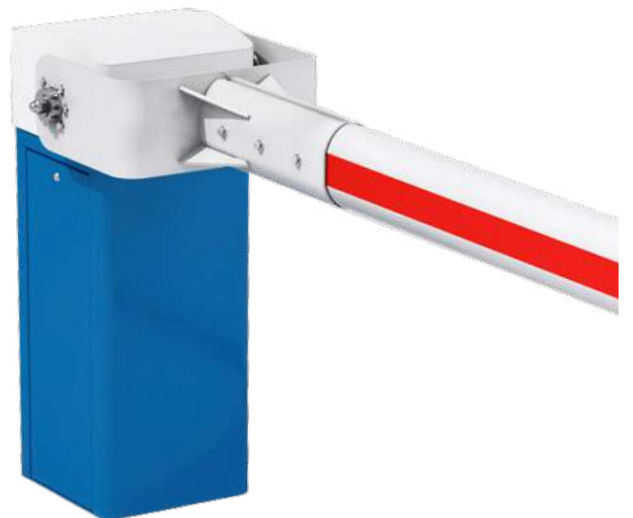
Fail safe open in the
event of a power
failure (optional)

Enhanced anti-vandalism
pack

**Reinforced anti
intrusion boom**

STANDARD CHARACTERISTICS

- **Speed:** Variable from 2 seconds
- **Continuous and intensive operation:** 10,000 cycles/day
- **Boom:** High-strength reinforced aluminium with retro-reflective strips
 - 180 x 118 mm : up to 6 m max
 - 135 x 93 mm : up to 8 m
- **Geared motor:** Three-phase / 230 V single-phase power supply
- **Spring:** Compression counterbalance spring
- **Housing:** Cathodization treated steel sheet with a Ronis 405 lock + Standard RAL 5015
- **Top cover:** 2 mm thick aluminium sheet with RAL 9010 paint
- **Boom support:** Reinforced axial clamping system
- **ONE-C board:** Control board operable via wired connection or network (Modbus TCP/IP, RS485), featuring an LED interface and remote access, ensuring optimized motor management (speeds, ramps), with updates via SD card and simplified installation
- **ONE-SENSE sensor:** Cam-mounted, providing precise, real-time position tracking of the boom arm down to the nearest degree, and enabling automatic learning of end positions



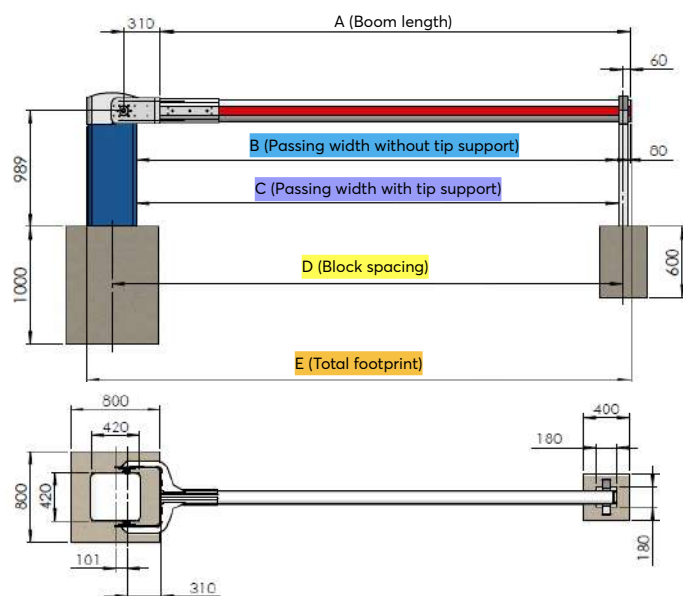
 INDUSTRY  PUBLIC & RESIDENTIAL  PAID PARKING

TECHNICAL SPECIFICATION

Power supply	230 V
Consumption	- 0.55 kW three-phase motor (irreversible) - 0.25 kW three-phase motor (reversible)
Geared motor	Irreversible or reversible for automatic lifting
Counterbalance	Compression spring + chain and pinion (irreversible)
Boom	Reinforced white lacquered aluminium oval 180x118 mm (up to 6 m max) or aluminium 135x93 mm (up to 8 m)
Half shell	Galvanised steel RAL 9010
Operating time	From 2 sec (variable depending on options)
MCBF (number of cycles)	5 million
MTBF (hours)	15,000
MTTR (mean time to repair)	30 minutes
Maximum boom length	8 m
Emergency operation	Irreversible gear motor: by hand crank Reversible gear motor: automatic lifting in the event of power failure
Temperature control	Anti-condensation heating (if irreversible)
Paint	Polyester powder
Overall dimensions (LxDxH)	800 x 800 x 1,000 mm
Operating temperature	-30 ° to +55 °C
IP rating	54

Boom length (m)	Weight (kg)	Tip supports
3.00	183	No
4.00	185	No
5.00	187	Yes
6.00	190	Yes
7.00	192	Yes
8.00	195	Yes

INSTALLATION



Boom length A in mm	Passing width without tip support B in mm	Passing width with tip support C in mm	Block spacing D in mm	Total footprint E in mm	Open barrier height H in mm
A	A = B - 200	A = C - 100	A = D - 350	A = E - 630	A = H - 1,300

OPTIONS

Customisation

- Polyester paint with a choice of colours (RAL to be defined)

Audible & visual signals

- Illuminated LED strip cover
- Illuminated boom
- Flashing lights on housing
- Flashing light on boom
- Penetration lights
- R23 red and green lights on integrated post
- Signalling via standardised panels
- Siren on passage violation

Safety

- Infrared barrier
- Reflex cell
- Loop detector
- Single and double direction virtual loops
- Ultrasonic detector
- Articulated boom
- Galvanised anti-corrosion housing
- LAPI
- Firefighter box - Button box
- Manual anti-shock rotation device
- Motorised rotation device
- Anti-vandalism pack
- Internal anti-fraud locking compatible only with boom \leq 3m (reversible)
- Programmable Cardin S 449-433 MHz 1-channel radio receiver
- Adjustable tip support
- Electromagnetic lock on rest
- Adjustable pendulum support
- AVB rest
- Articulated low grid (GA)
- High protection grid (HP)
- Full height Flex grid (GTH FLEX)
- Full height grid (GTH)
- LBA Connect

Power supply:

- \varnothing 63 mm janolene
- U-1000 RO 2V 3 x 2.5 mm² cable

Remote control:

- \varnothing 40 mm green janolene
- 5 pair 9/10 core telephone cable

Arm rest connection:

- \varnothing 30 mm tube
- Infrared cell, magnetic plunger, etc.

Magnetic loop cable:

- \varnothing 30 mm tube
- Twisted pair loop cable

Sealing template + 4 mounting rods

- The template remains level in situ and must rest entirely on solid concrete
- Arm rest base plate

