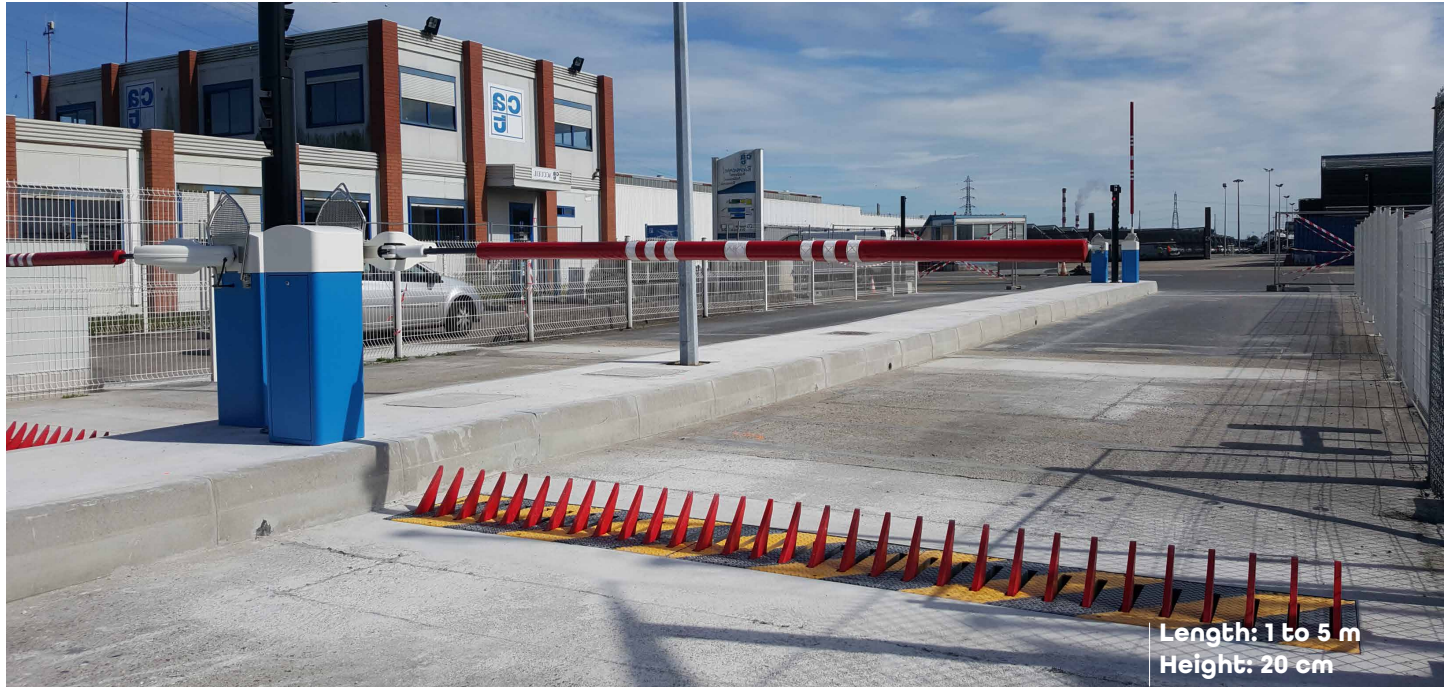


## SECURITY AUTOMATIC REVERSIBLE TYRE KILLER

### LENGTH UP TO 5 m



Continuous and intensive operation:  
3,000 cycles/day

Integrated drive system in a technical compartment

Factory-tested and connected hydraulic circuit

Stand-alone or barrier-coupled operation

**Modular in 50 cm increments**

### STANDARD CHARACTERISTICS

#### • Tyre killer:

- Automatic recessed tyre killer up to 5 m
- Withstands an axle load of 40 T
- Folded steel sheet casing housing the teeth and hydraulic unit

#### • Finishes:

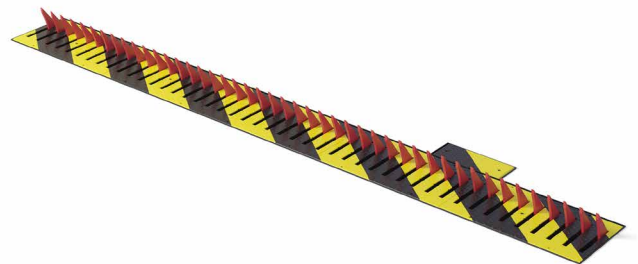
- Mechanically welded steel tread plate with reinforcements
- RAL standard 1021 for the tread plate and 3020 for the teeth

#### • Operation:

- One-C PLC controlled: Power supply, PLC, Frequency converter, SD card, RJ45 (Modbus) and torque limiter
- Magnetic limit switches
- Compatible with all our barriers
- Built-in hydraulic drive system

#### • Installation:

- Nylon bearing-mounted tooth mounting shaft



## TECHNICAL SPECIFICATION

Drive system	230 V
Voltage	680 W
Operating time	2 seconds
MCBF (number of cycles)	5,000,000
MTBF (hours)	15,000 h
Paint / Finish	250° polyester powder coating
Dimensions	1 m to 5 m
Teeth (H - thickness)	210 - 20 mm
Operating temperature	-30°C + 50°C
IP components	IP54

## OPTIONAL FEATURES

### Customisation

- Special colour paint on RAL base

## INSTALLATION

