

A25-90C80

**AUTOMATIC RISING SECURITY BOLLARD -
WITHSTANDS THE IMPACT OF A 3.5-TONNE HGV AT 80 KM/H**
H90 CM - Ø25 CM



**Continuous
and intensive
operation:
3,000 cycles/day**

No sensitive
elements in the
bollard frame

Surfaces exposed
to tread made
of stainless steel

Operational after
a double crash test

Low and simplified
maintenance

STANDARD CHARACTERISTICS

• Cylinder:

- Steel treated with zinc plating and epoxy powder coating
Ø 25 cm - height 90 cm
- RAL 7016 colour
- Stainless steel bollard top, thickness 20 mm
- Brush seal to prevent scratching on housing
- Class 2 reflective tape

• Frame:

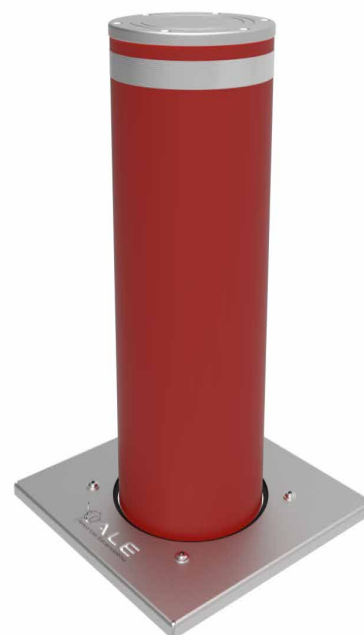
- Thick steel floor plate protected by a stainless steel cover plate
- Frame made of 6 mm thick galvanised steel
- Lateral guide with HDPE sliders and rollers
- M16 anchor bracket, strengthening connection to the concrete foundation

• Drive system:

- Remote hydraulic drive system (Factory connected circuit), the bollard is supplied with 15 m of oil-filled reinforced pipes with push-pull quick coupler
- Low limit switch integrated into the cylinder head, accessible without disassembling the bollard
- Biodegradable hydraulic oil with low viscosity variation

• Standards:

- NF P 98-310-compliant
- Dimensions compliant with the French Decree of 18/09/2012 on the accessibility of roads and public spaces



MADE IN FRANCE



A25-90C80

TECHNICAL SPECIFICATION

| | |
|---------------------------|----------------------------------|
| Drive system | Remote hydroelectric |
| Resistance | 1,851,000 J |
| Operating time | 4 to 6 s |
| MCBF (number of cycles) | 2,000,000 |
| MTBF (hours) | 25,000 h |
| MTTR (min) | 30 min |
| Connection cable | 15 m of hydraulic pipes supplied |
| Paint / Finish | RAL 7016 steel colour |
| Cylinder dimensions (H-Ø) | 900 mm / 250 mm |
| Floor plate dimensions | 430 x 430 mm |
| IP components | IP67 |

For information on the power, power supply, temperature and behaviour in the event of a power outage, please refer to the technical module sheet

CERTIFICATION

Resistance certified by double crash test with a functional bollard after impact:



Two 3.5-tonne trucks launched consecutively at 64 km/h and then at 80 km/h



Supplemented by a digital crash test: 7.5 tonnes at 80 km/h

OPTIONAL FEATURES

Security

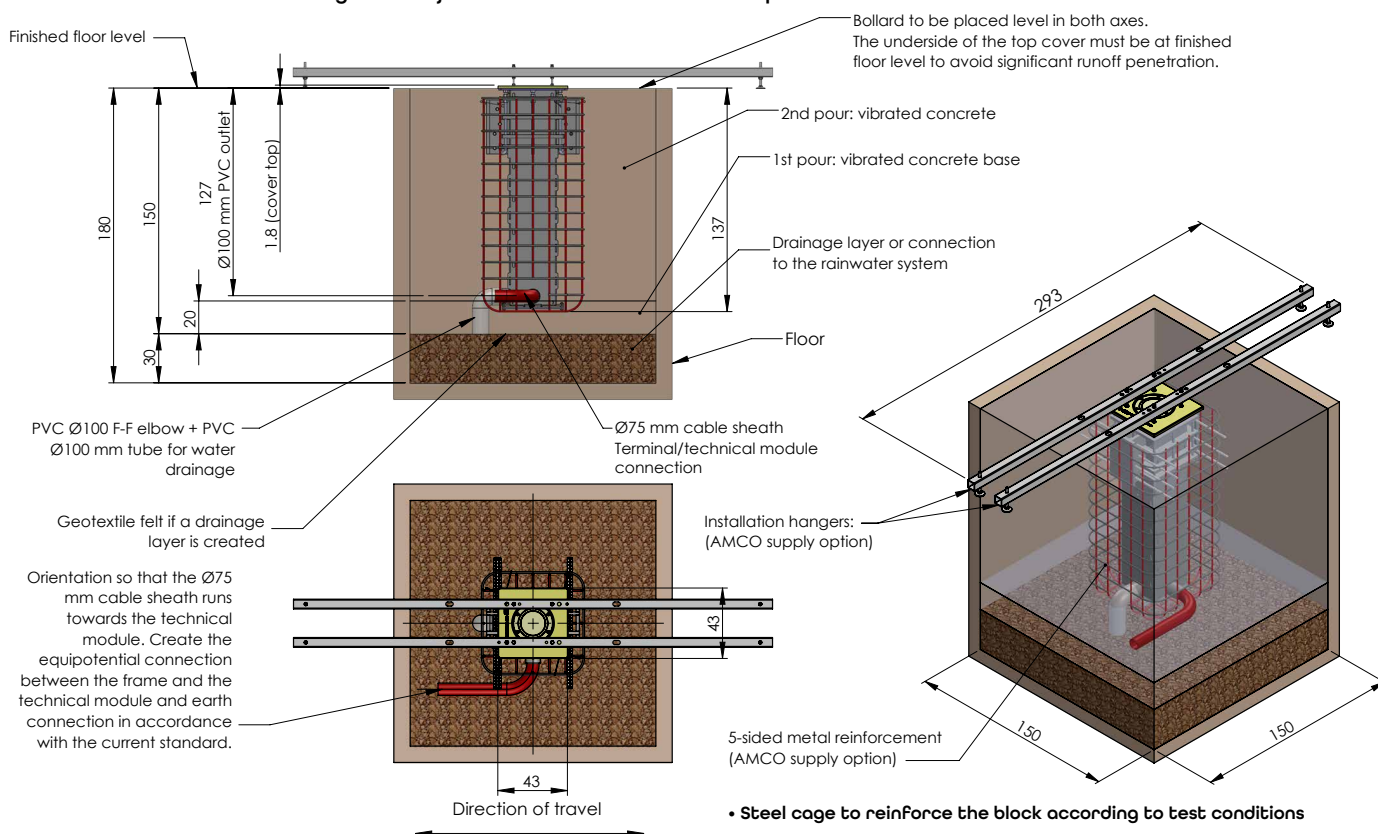
- Top limit switch
- Suspension set allowing sealing without prior work
- Anti-vandalism screws
- Adjustable foot device for laying on concrete slab
- Additional connection cable length
- Snap-off nuts to secure access to the bollard
- Heating system for cold weather or exposure to snow or frost conditions
- Extreme cold oil

Customisation

- Choice of RAL colours
- Paint with seafront treatment
- Reinforcement
- Customised bollard head
- Installation aid: Installation kit (steel cage feet hanger)

INSTALLATION

Installation of the bollard with hangers or adjustable feet in 24 hours without prior structural work



- Steel cage to reinforce the block according to test conditions
- Hanger set for sealing without prior work
- Adjustable foot device for mounting on concrete slab (option under validation)

