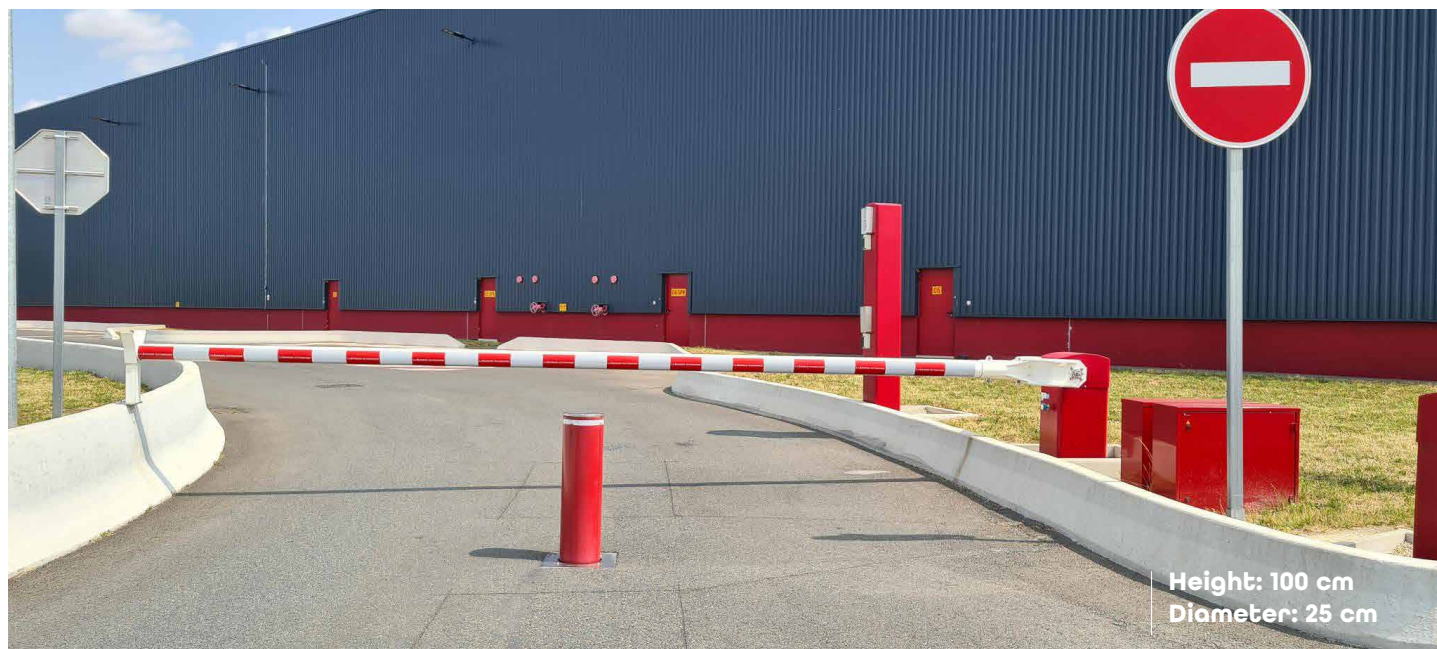


# A25-100-7548

**AUTOMATIC RETRACTABLE SECURITY BOLLARD -  
WITHSTANDS THE IMPACT OF A 7.2-TONNE HGV AT 48 KM/H**  
H100 CM - Ø25 CM



Continuous  
and intensive  
operation:  
3,000 cycles/day

No sensitive elements  
in the bollard frame

Surfaces exposed  
to tread made  
of stainless steel

**Operational  
after crash test**

Low and simplified  
maintenance

## STANDARD CHARACTERISTICS

### • Cylinder:

- Steel treated with zinc plating and epoxy powder coating  
Ø 25 cm - height 100 cm
- RAL 7016 colour
- Stainless steel bollard top, thickness 20 mm
- Brush seal to prevent scratching on housing
- Class 2 reflective tape

### • Frame:

- Thick steel floor plate protected by a stainless steel cover plate
- Lateral guide with HDPE sliders
- M16 anchor bracket, strengthening connection to the concrete foundation
- Frame made of 6 mm thick galvanised steel

### • Drive system:

- Remote hydraulic drive system (Factory connected circuit), the bollard is supplied with 15 m of oil-filled reinforced pipes with push-pull quick coupler
- Low limit switch integrated into the cylinder head, accessible without disassembling the bollard

### • Standards:

- NFP 98-310-compliant
- Dimensions compliant with the French Decree of 18/09/2012 on the accessibility of roads and public spaces



MADE IN FRANCE



# **A25-100-7548**

## **TECHNICAL SPECIFICATION**

Drive system	Remote hydroelectric
Resistance	640,000 J
Operating time	4 to 6 s
MCBF (number of cycles)	2,000,000
MTBF (hours)	25,000 h
MTTR (min)	30 min
Connection cable	15 m of hydraulic pipes supplied
Paint / Finish	RAL 7016 steel colour
Cylinder dimensions (H-Ø)	1,000 mm / 250 mm
Floor plate dimensions	430 x 430 mm
IP components	IP67

For information on the power, power supply, temperature and behaviour in the event of a power outage, please refer to the technical module sheet

## **CERTIFICATION**

Resistance certified by crash test with a functional bollard after impact:



7.2 tonnes at 48 km/h

## **OPTIONAL FEATURES**

### **Security**

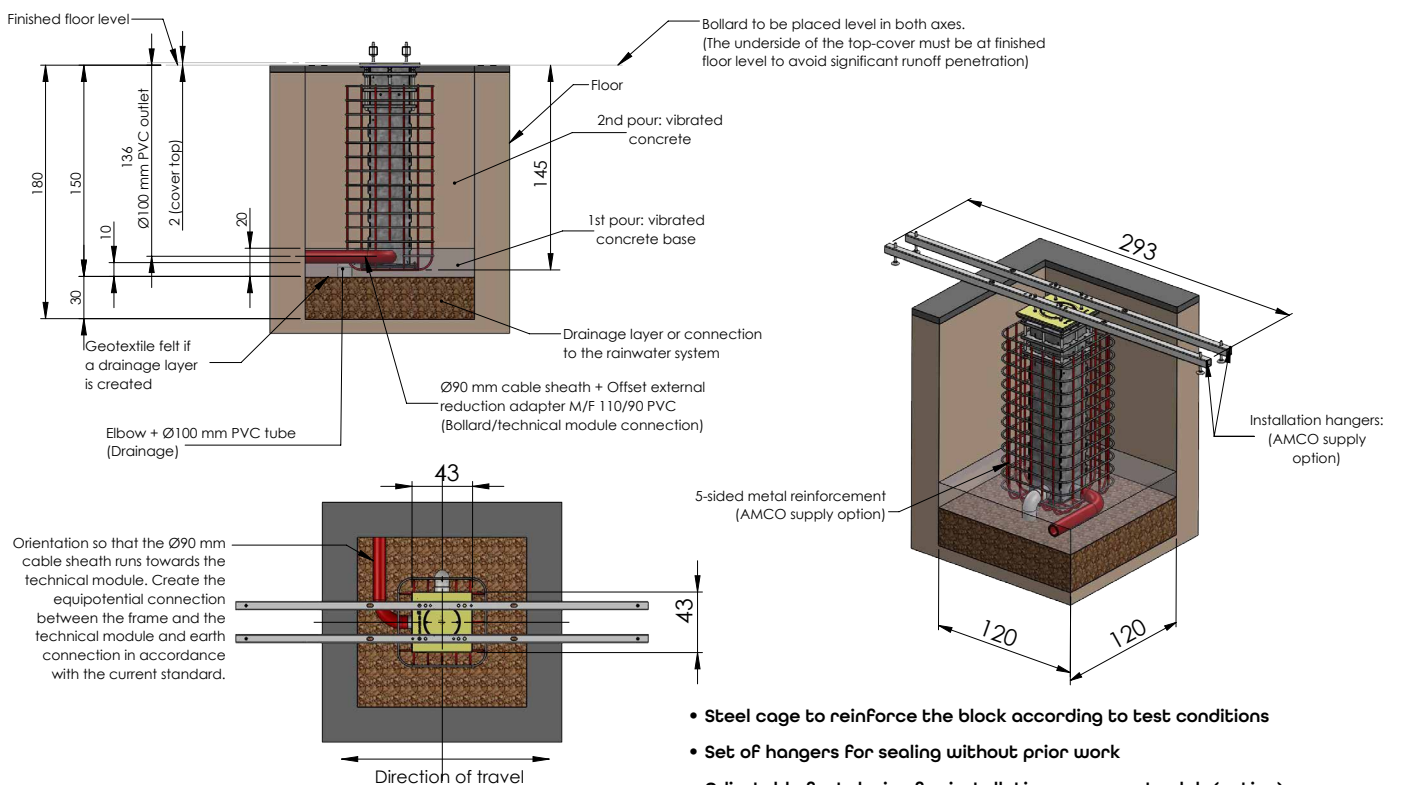
- Top limit switch
- Set of hangers allowing sealing without prior work
- Anti-vandalism screws
- Adjustable foot device for installation on concrete slab
- Additional connection cable length
- Snap-off nuts to secure access to the bollard
- Heating system for cold weather or exposure to snow or frost conditions
- Extreme cold oil

### **Customisation**

- Choice of RAL colours
- Stainless steel sleeve
- Cover opening detection sensor
- Brushed stainless steel finish
- Microblasted stainless steel finish
- Customisation on the bollard head
- Paint with seafront treatment
- Installation aid: Installation kit (steel cage feet hanger)
- Illuminated strip integrated into the bollard
- Illuminated strip and customisation on the bollard head

## **INSTALLATION**

Installation of the bollard with hangers or adjustable feet in 24 hours without prior structural work



- Steel cage to reinforce the block according to test conditions
- Set of hangers for sealing without prior work
- Adjustable foot device for installation on concrete slab (option)

