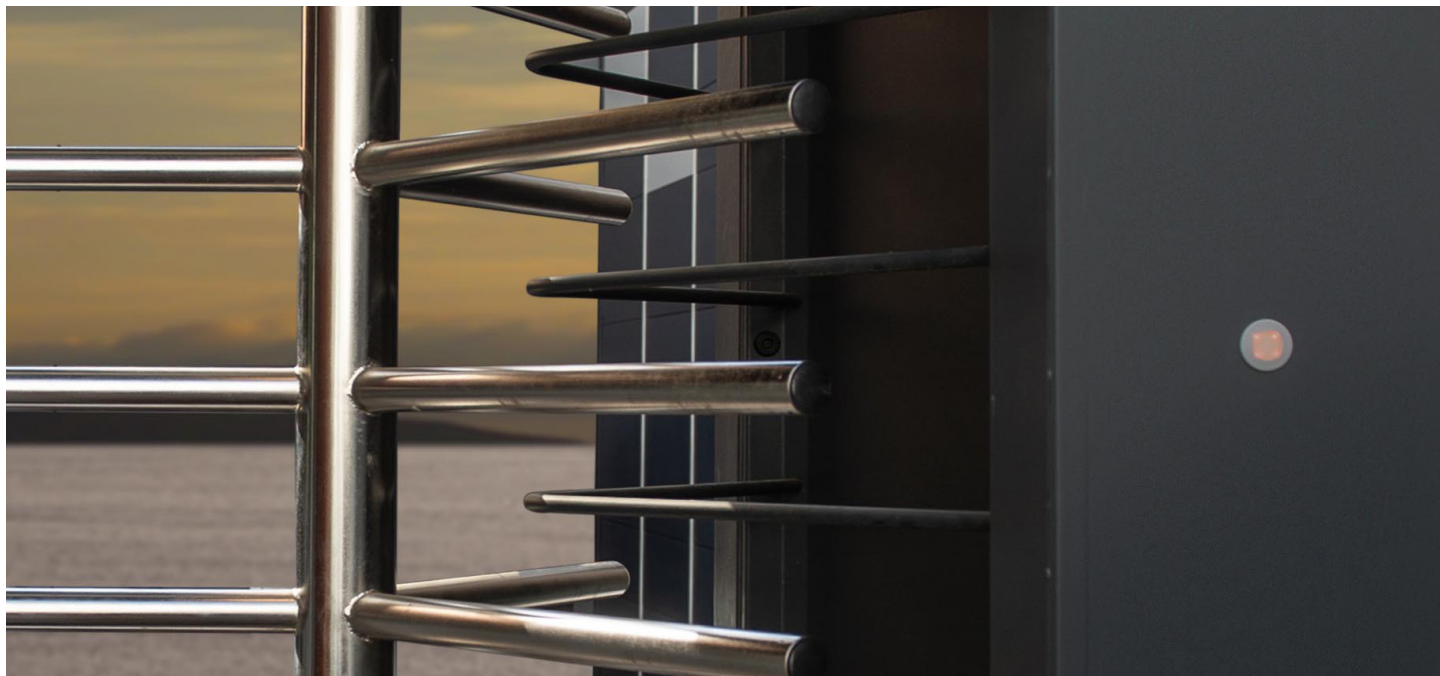


# LBA T20

## BIDIRECTIONAL DUAL PEDESTRIAN TURNSTILE SECURES PEDESTRIAN ACCESS AND PROMOTES SINGLE ENTRY



Intensive operation, up to 20 passages per minute x2

Can be used as an entrance, exit, or entrance/exit

**Access control components integrated into the electronic circuit board on the front panel for easy maintenance**

Removable front panel to allow installation of access control scanners

Supplied assembled and wired, with (optional) drilling template

### STANDARD CHARACTERISTICS

- **Continuous and intensive operation:** Up to 20 passages per minute x2
- **Passage:** 2 two-way passage corridors
- **Access panel and access control elements:** Door with 3 locks
- **Passage indicator light:** Smart red/green access indicator light on either side, controlled by the access control system
- **Roof:** Aluminium with a rainwater drainage system
- **Steel plate:** Galvanised steel, polyester paint, RAL 9010
- **Rotor:** Direct connection requiring no fasteners
- **Rotation sensor:** For precise identification of the position out of 360°
- **lighting:** LEDs integrated on either side
- **PLC:** With communication via IP



## TECHNICAL SPECIFICATION

Power supply	230 V
Rotor	ø 40 mm galvanised steel arm
Tubes	ø 40 mm
Paint	Galvanisation + aluminium roof RAL 9010
Weight	600 kg
Opening width	3 x 120° x 2
Overall dimensions (Lx-HxD)	2383 x 2328 x 1566 mm
Overall dimensions (LxHxD)	2600 x 1700 x 200 mm
Clearance height	1988 mm
Clearance width	2 x 601 mm
IP rating	54

## OPTIONS

### Customisation

- Polyester paint with a choice of colours (RAL to be defined)
- Twilight switch

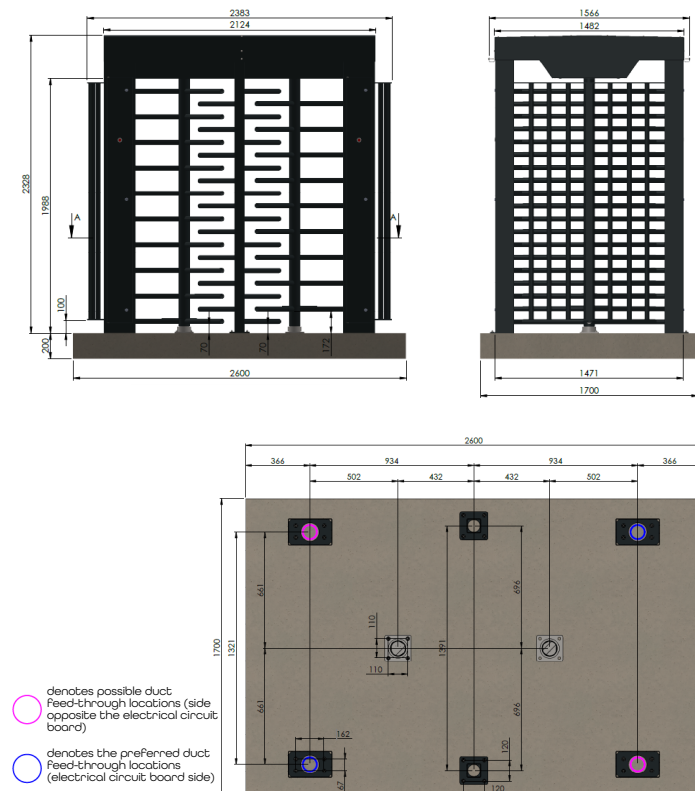
### Audible & visual signals

- Smart LED pictograms for traffic direction

### Safety

- Drilling template
- Two-way locking or locked in one way and free the other way
- Anti-climb roof
- Anti-bacterial bars
- Lockout door
- Firefighter key release
- Passage reducer
- Stainless steel rotor
- Comfort sleeves
- Heel protector

## INSTALLATION



### Power supply:

- U-1000 RO 2V 3 x 2.5 mm<sup>2</sup> cable, 230 V single-phase

### Remote control:

- 5-pair 9/10 core telephone cable

### Ducts:

- ø40 mm ducts for power and remote control cables

### Concrete block:

- 1800 mm long x 1700 mm wide x 200 mm deep

### Installation aid:

Drilling template supplied for installation on a concrete block. Two-part pre-assembled set:

- Turnstile assembly
- Roof assembly to be mounted on the access assembly to finalise the installation

