

LBA T20

BIDIRECTIONAL DUAL PEDESTRIAN TURNSTILE SECURES PEDESTRIAN ACCESS AND PROMOTES SINGLE ENTRY



Intensive operation, up to 20 passages per minute x2

Can be used as an entrance, exit, or entrance/exit

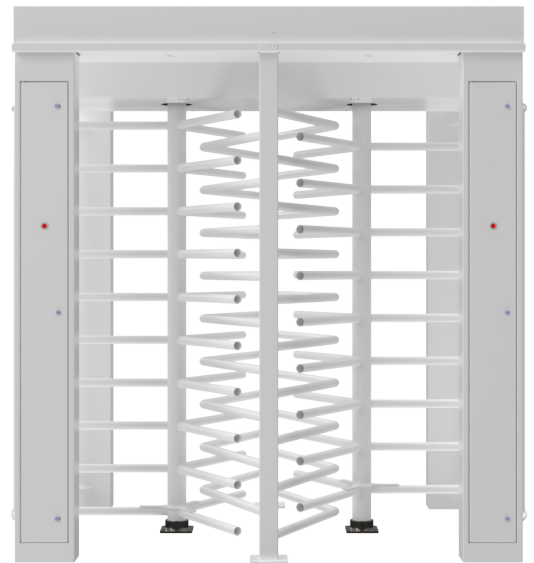
Access control components integrated into the electronic circuit board on the front panel for easy maintenance

Removable front panel to allow installation of access control scanners

Supplied assembled and wired, with (optional) drilling template

STANDARD CHARACTERISTICS

- **Continuous and intensive operation:** Up to 20 passages per minute x2
- **Passage:** 2 two-way passage corridors
- **Access panel and access control elements:** Door with 3 locks
- **Passage indicator light:** Smart red/green access indicator light on either side, controlled by the access control system
- **Roof:** Aluminium with a rainwater drainage system
- **Steel plate:** Galvanised steel, polyester paint, RAL 9010
- **Rotor:** Direct connection requiring no fasteners
- **Rotation sensor:** For precise identification of the position out of 360°
- **lighting:** LEDs integrated on either side
- **PLC:** With communication via IP



TECHNICAL SPECIFICATION

Power supply	230 V
Rotor	ø 40 mm galvanised steel arm
Tubes	ø 40 mm
Paint	Galvanisation + aluminium roof RAL 9010
Weight	600 kg
Opening width	3 x 120° x 2
Overall dimensions (Lx-HxD)	2383 x 2328 x 1566 mm
Overall dimensions (LxHxD)	2600 x 1700 x 200 mm
Clearance height	1988 mm
Clearance width	2 x 601 mm
IP rating	54

OPTIONS

Customisation

- Polyester paint with a choice of colours (RAL to be defined)

- Twilight switch

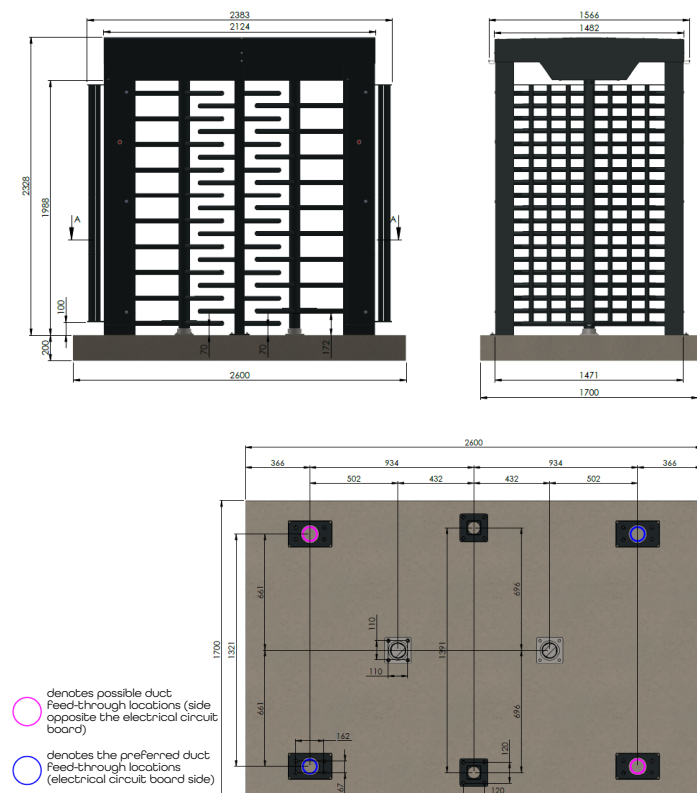
Audible & visual signals

- Smart LED pictograms for traffic direction

Safety

- Drilling template
- Two-way locking or locked in one way and free the other way
- Anti-climb roof
- Anti-bacterial bars
- Lockout door
- Firefighter key release
- Passage reducer
- Stainless steel rotor
- Comfort sleeves
- Heel protector

INSTALLATION



Power supply:

- U-1000 RO 2V 3 x 2.5 mm² cable, 230 V single-phase

Remote control:

- 5-pair 9/10 core telephone cable

Ducts:

- ø40 mm ducts for power and remote control cables

Concrete block:

- 2600 mm long x 1700 mm wide x 200 mm deep

Installation aid:

Drilling template supplied for installation on a concrete block. Two-part pre-assembled set:

- Turnstile assembly
- Roof assembly to be mounted on the access assembly to finalise the installation

